

FOR LEASE

LANDMARK DISTRICT



OFFICE OR RETAIL SPACE

Unit B3 - 1620 Dickson Avenue
Kelowna, BC

 LEASABLE AREA
± 1,375 sq ft

 AVAILABILITY
Immediately

 BUILDING
Landmark V

Retail storefront facing Dickson Ave located in the vibrant Landmark District. This fixtured space is suited for retail, food, personal, health, and office services.

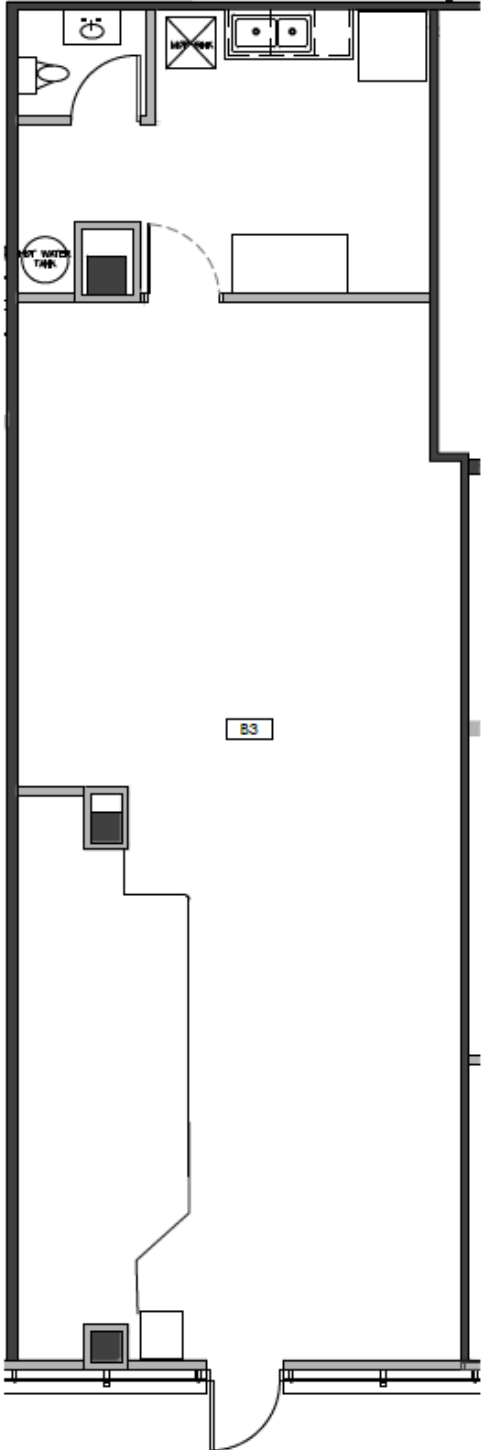
LIVE, WORK & PLAY

You can do it all here

Contact Us :

-  Phone Number : 250-763-2305
-  Website : LandmarkDistrict.ca
-  Email Address : Leasing@stobergroup.com

FLOOR PLAN



BUILDING PLAN



INTERIOR PHOTOS



LEASING
INQUIRIES



**LANDMARK
DISTRICT**

1700 - 1631 Dickson Ave
Kelowna, BC

Scott Wandler
Director of Leasing

Office: 250.763.2305 x322
Email: swandler@stobergroup.com

Kristopher Mazey
Leasing Manager

Office: 250.763.2305 x341
Email: kmazey@stobergroup.com

Melissa Bell
Commercial Leasing Administrator

Office: 250.763.2305 x346
Email: mbell@stobergroup.com



STOBER
GROUP

DISCLOSURE This document has been prepared by Al Stober Construction ("ASC") for advertising and general information only ("Information"). ASC does not guarantee the accuracy, correctness and completeness of the Information. The Information may change and any property described in the Information may be withdrawn from the market at any time without notice.